

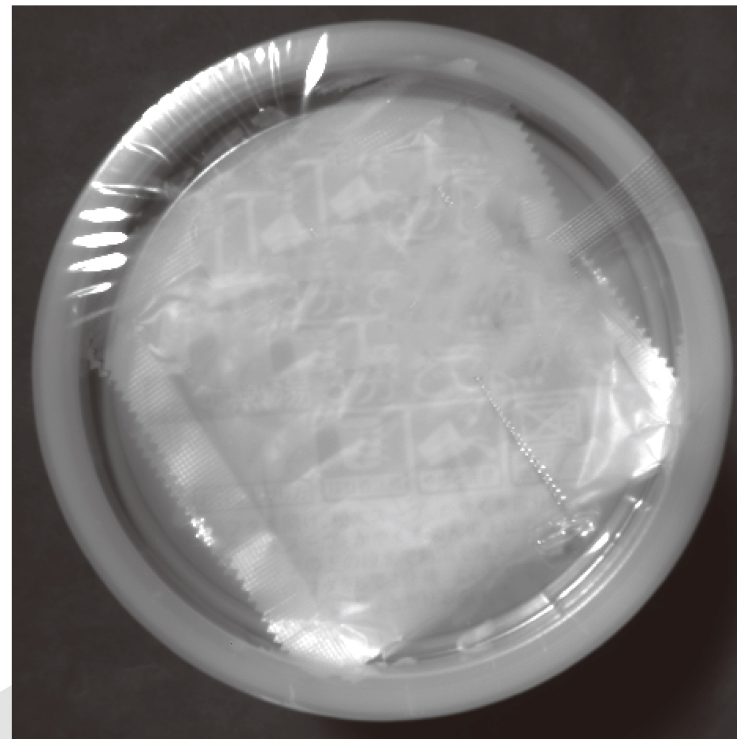
Cup noodle's seasoning package

Check for seasoning package
through plastic

Imaging method: reflection
Barrier: plastic



VIS image



SWIR image

Soup packages in plastic bag

Detect the quantity of soup packages through plastic

Imaging method: transmission
Barrier: vinyl



VIS image



SWIR image

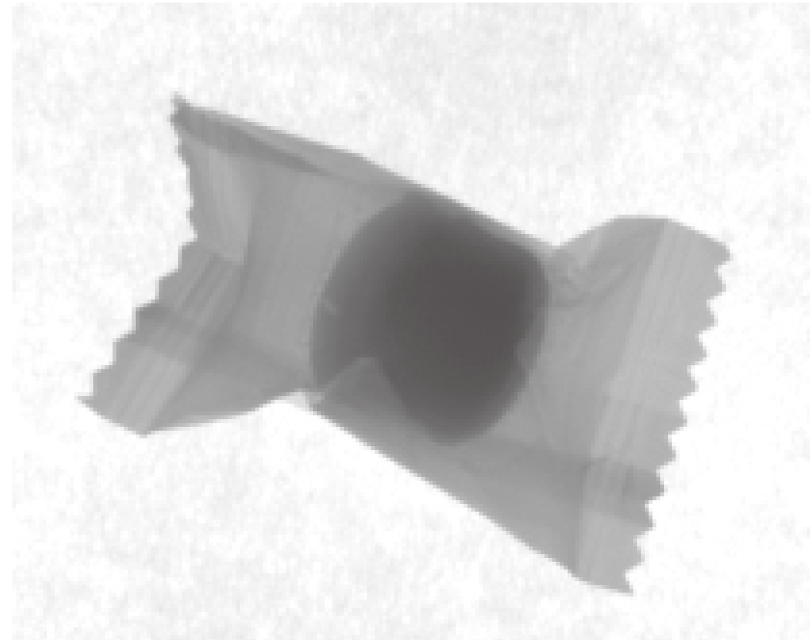
Candy in plastic wrapper

Inspect the candy inside wrappers

Imaging method: transmission
Barrier: vinyl



VIS image



SWIR image

Liquid fill level

Detect the liquid level inside paper containers

Imaging method:
transmission
Barrier: paper



VIS image



SWIR image

Fill level



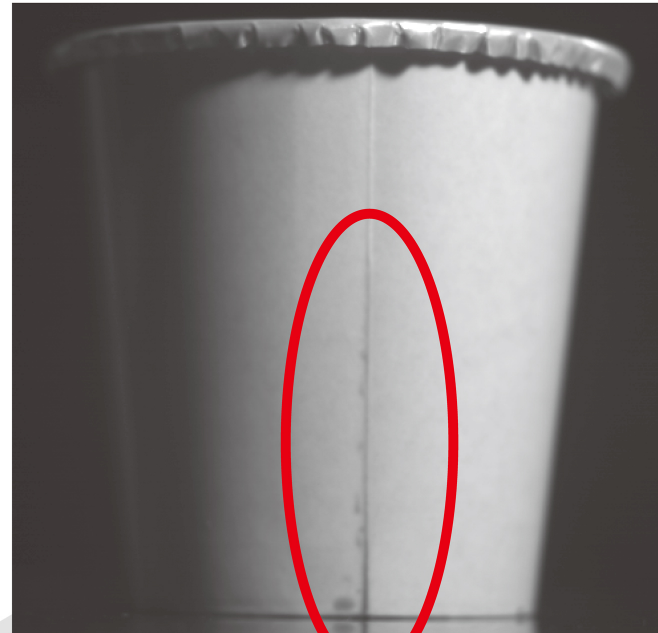
Leaks in containers

Identify leakage from container seams

Imaging method: transmission
Barrier: paper



VIS image

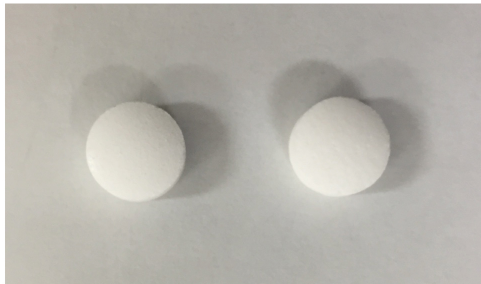


SWIR image

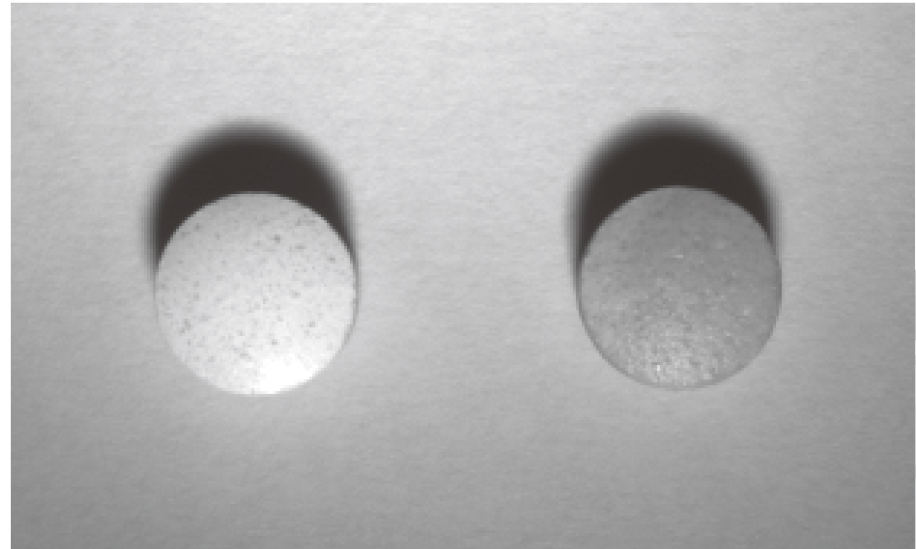
Water content in tablets

Identify moisture content, which cannot be observed by human eyes

Imaging method: reflection



VIS image



SWIR image (right: moist tablet)

Agriculture quality inspection

Locate a produce's damaged area

Imaging method: reflection



VIS image

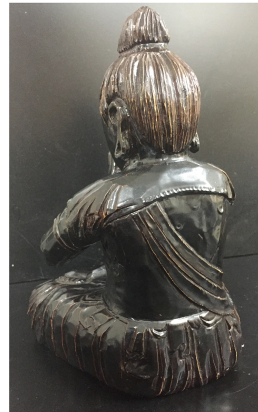


SWIR image

See beneath a coating (cultural artifacts)

See text hidden under lacquer

Imaging method: reflection
Barrier: lacquer



VIS image



Text hidden
under lacquer

SWIR image

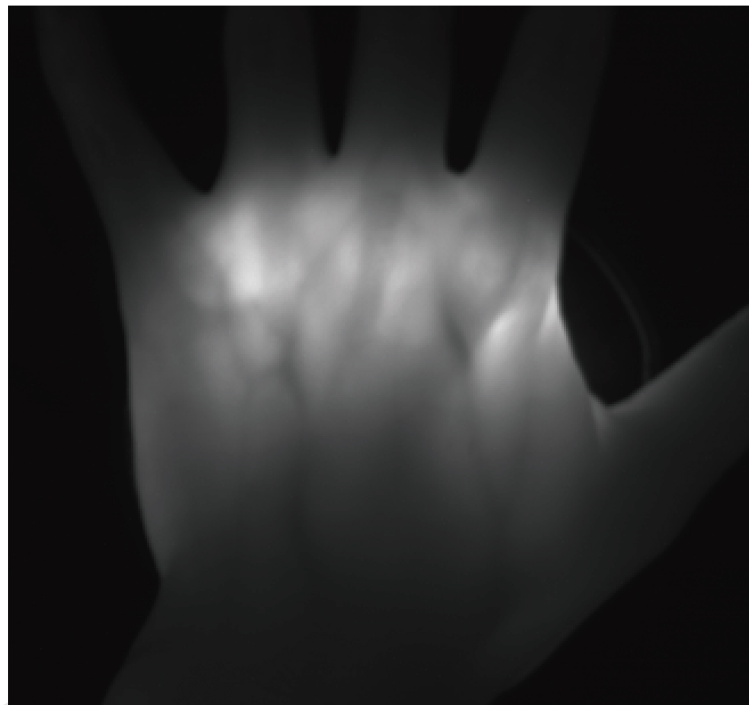
Blood vessels

Identify the blood vessel distribution

Imaging method: transmission



VIS image

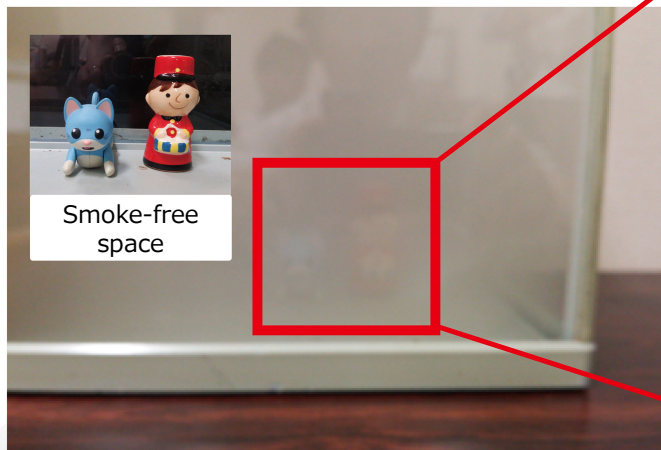


SWIR image

See objects through smoke

Identify objects through smoke

Imaging method: reflection



VIS image

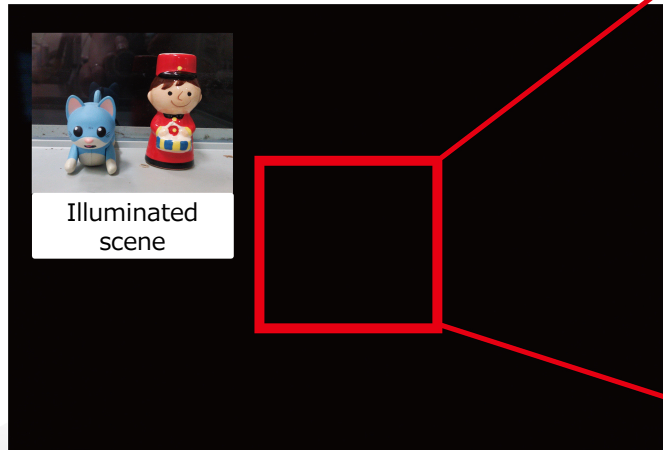


SWIR image

Night vision

Identify objects in low-light conditions

Imaging method: reflection



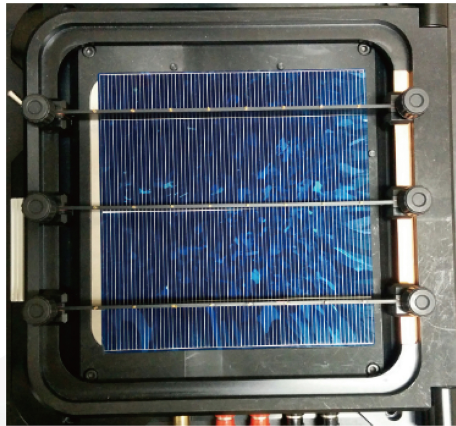
VIS image



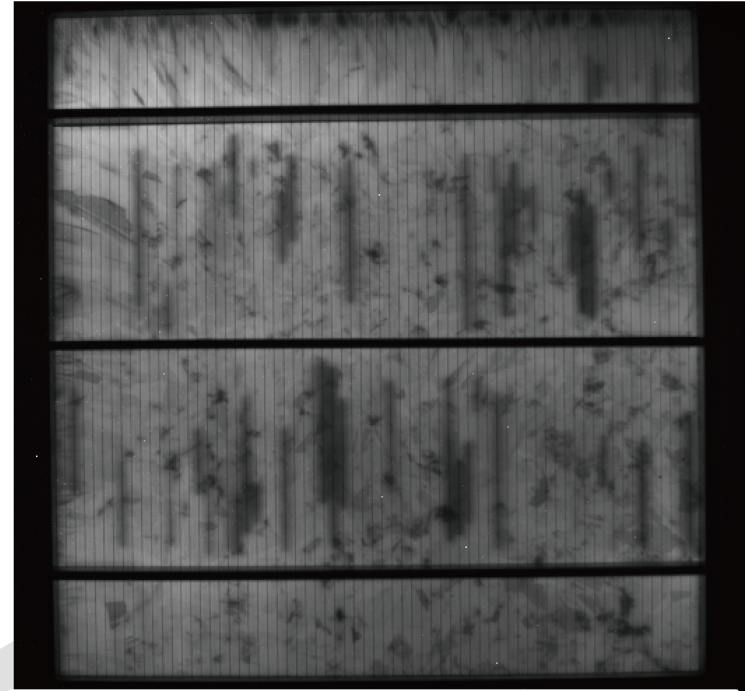
SWIR image

Semiconductor inspection

See defects on solar panels
(crack, defective electrode, etc.)



VIS image

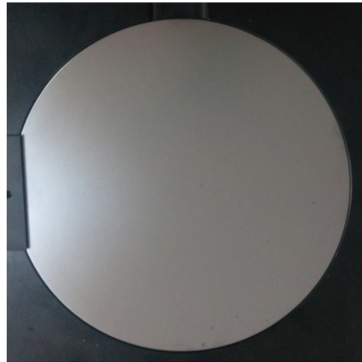


SWIR image (luminescent image)

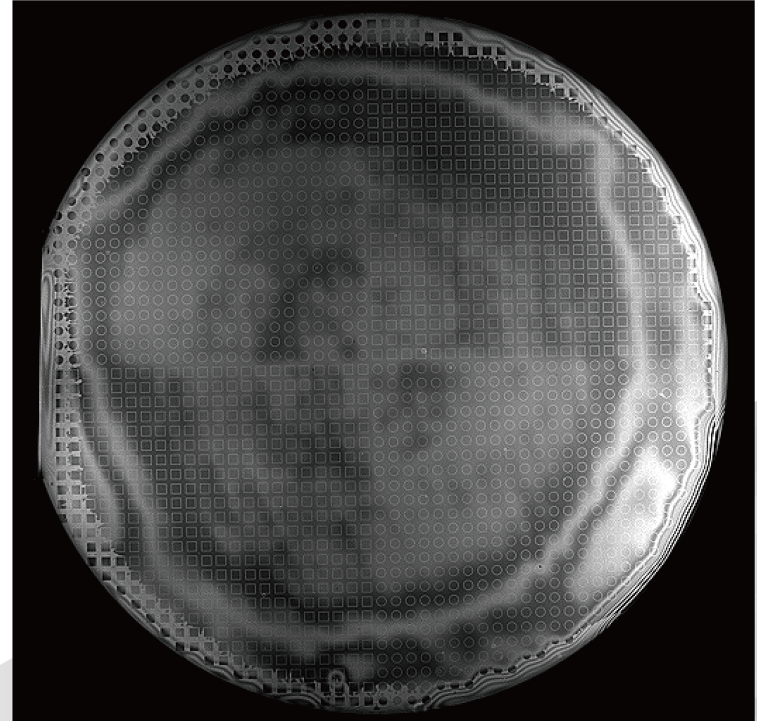
Wafer inspection

See voids and patterns on laminated wafer

Imaging method: transmission



VIS image

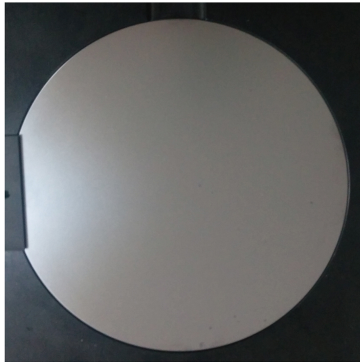


SWIR image

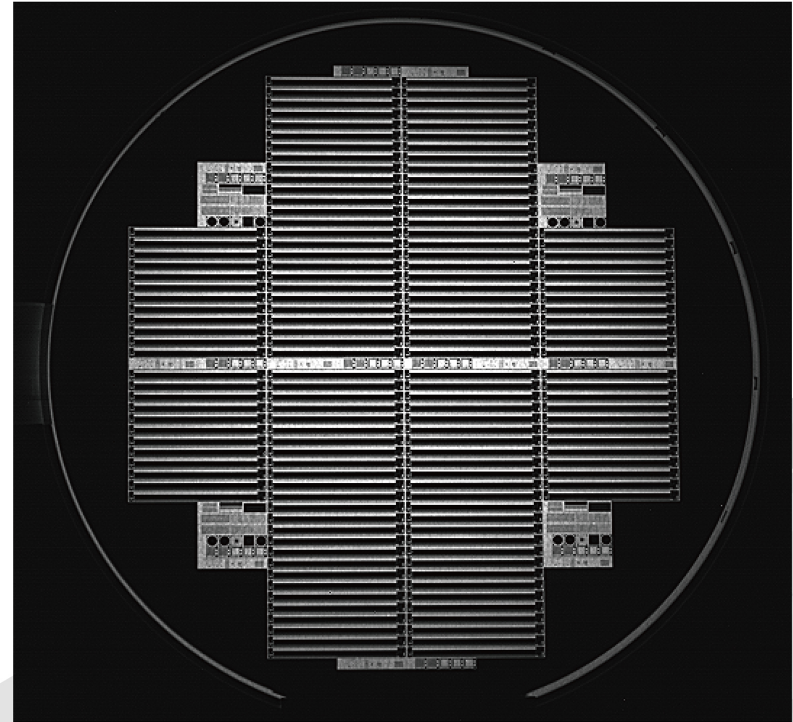
Wafer inspection

See the pattern on the backside

Imaging method: transmission



VIS image



SWIR image